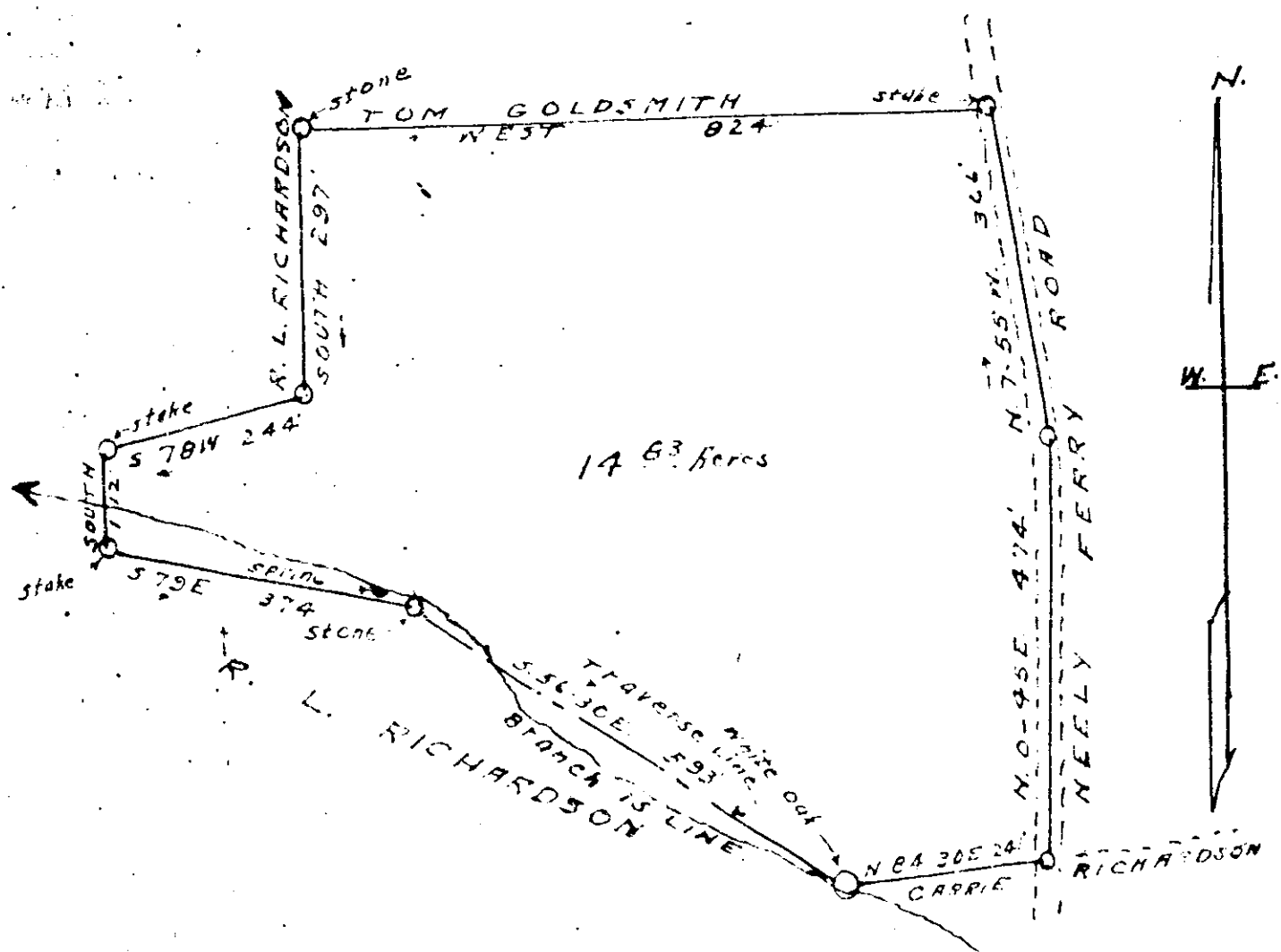


Plat Book W W, Page 143



PROPERTY OF
 E. L. MARTIN EST.
 GREENVILLE COUNTY, S.C.
 Scale 1" = 200' Sept. 1947
 W/W-143 W. J. Ridale - surveyor

AUG 26 1961

5125

Recorded August 26, 1961 at 11:44 A. M. #5435